

RCUK international engagement with Japan

Sophie Laurie

Head of International

Research Councils UK Strategy Unit



Research Councils UK



Arts & Humanities
Research Council

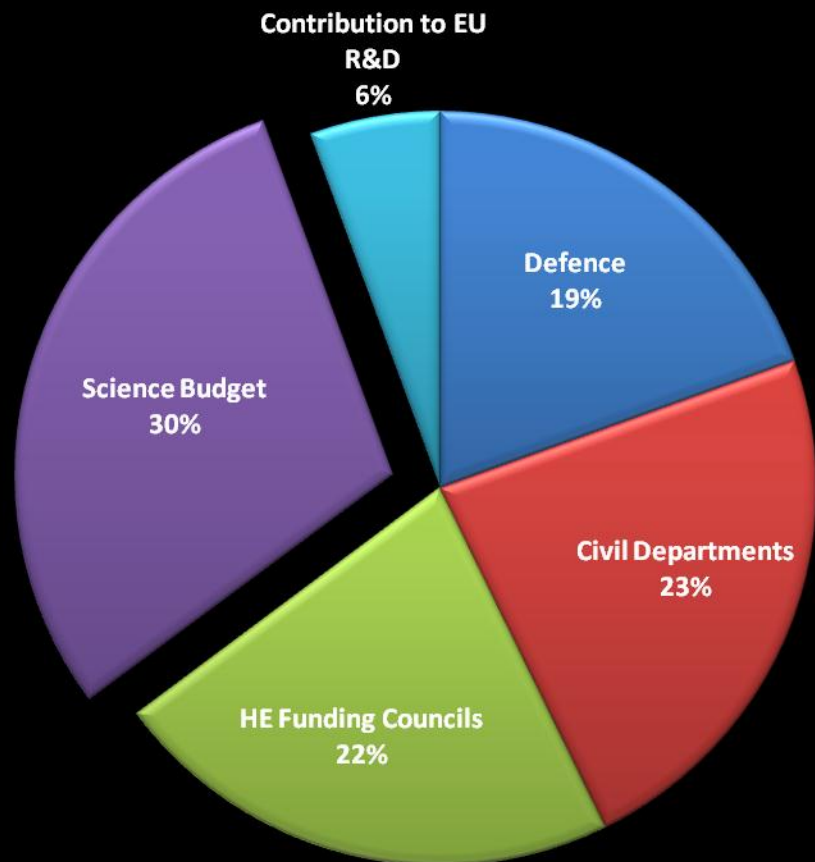


Science & Technology
Facilities Council



NATURAL
ENVIRONMENT
RESEARCH COUNCIL

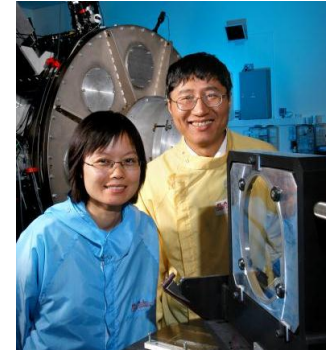
UK Government funded R&D



Total Government R&D Expenditure: £10,195 million (2008/9)

Performing research

- Higher education institutions (75% funding to 25 institutions). Direct support for over 30,000 researchers
- Including up to 15,500 Doctoral students
- Research Council institutes (four RCs) employ around 9,000 scientists and technicians
- International ventures (eg CERN, the world's largest particle physics laboratory)



What is Research Councils UK?

- The name for the Research Councils working together
- Increases the collective visibility, leadership and policy influence of the Research Councils
- Provides a single focus for collective dialogue with stakeholders
- Ensures greater harmonisation of operational and administrative functions across the Councils



RCUK Overseas

- **UK Research Office (UKRO)**
(established 1984 and located in Brussels, to promote UK participation in EU programmes - first European Country to do this)

HEI and counterpart subscribers

- **RCUK China (2007)**
- **RCUK US (2007)**
- **RCUK India (2008)**



SIN-UK Science and Innovation Network

Europe (17)

North: Stockholm (2), Copenhagen (1)

Central/East: Berlin (3), Munich (1), Berne (2), Warsaw (2), Prague (1)

West: Paris (3), The Hague (1), Rome (1), Milan (1), Madrid (1 from Autumn 08)

Canada (4)

Ottawa (2), Toronto (2)

USA (14)

Washington DC (3), Atlanta (1), Boston (2), Chicago (1), Houston (2), LA (2), San Francisco (3)

Brazil (3)

Sao Paulo (3)

South Africa (1)

Pretoria (1)

Russia (2)

Moscow (2)

Israel (1)

Tel Aviv

China (13)

Beijing (7), Guanzhou (2), Shanghai (3), Chongqing (1)

South Korea (4)

Seoul (4)

Japan (8)

Tokyo (6), Osaka (2)

Taiwan (2)

Taipei (2)

Singapore & Malaysia (4)

Singapore (3), KL (1)

India (10)

Delhi (5), Mumbai (2), Bangalore (3)

Australia & NZ (2)

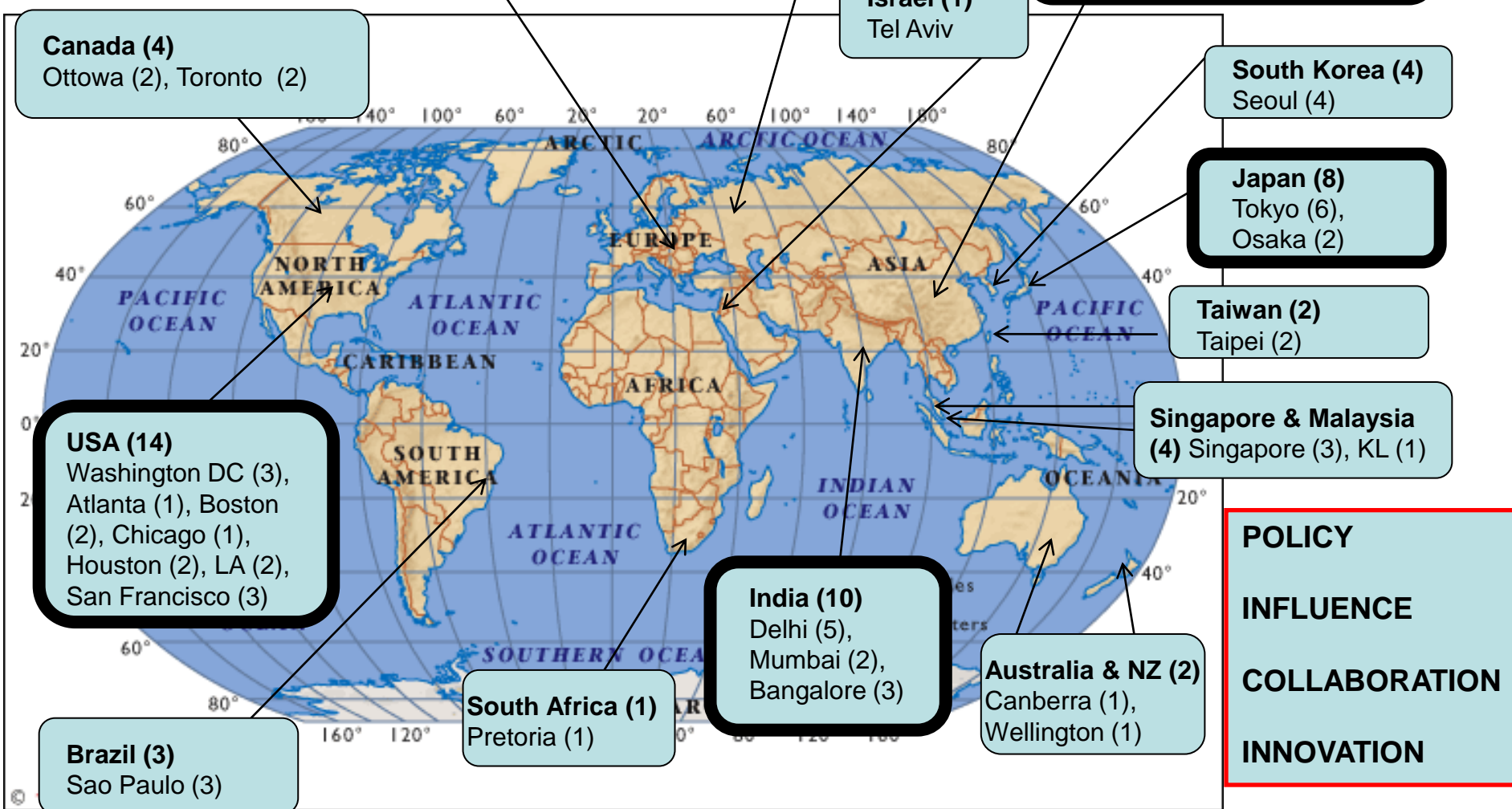
Canberra (1), Wellington (1)

POLICY

INFLUENCE

COLLABORATION

INNOVATION



British Embassy related S&T activity FY 2011/12

Life Sciences

- Neuroscience symposium
- Personalised medicine workshop
- Regenerative medicine workshop

ICT and Advanced Engineering

- Robotics mission
- Multimodal imaging workshop
- Small Satellite workshop
- Advanced Composites workshop

Energy & Environment

- Biofuels workshop
- Carbon Capture and Storage event
- Smart Grid/Smart communities

Over 150 S&T supported events over the last 5-years:

- Workshops
- Missions
- Researcher exchange
- High-level visits



British Embassy related S&T activity; examples this year

GREEN INNOVATION

- ❑ MATERIALS SECURITY; Rare Earth Elements (December)
- ❑ Smart Grid MoU (February)
- ❑ Space MoC (April)

RECOVERY FROM DISASTER

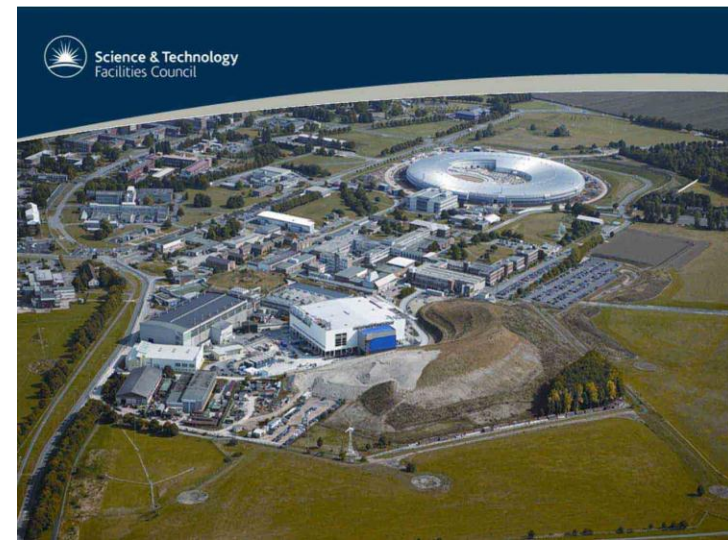
- ❑ Disaster Research (October)
- ❑ Nuclear Safety R&D (October)

LIFE INNOVATION

- ❑ Target Validation and Healthcare (January)
- ❑ High Performance Modelling (December)
- ❑ Ageing; Neurodegeneration (February)

INTERNATIONAL COOPERATION

- ❑ University-Industry Collaboration (January)



British Embassy Tokyo/Consulate General Osaka Science and Innovation Team Organogram

As of 18 Sept 2012



Kevin Knappett
First Secretary
Head of Section



Ed Thomson
Vice-Consul

Energy and Advanced Technology



Seiichi Asano
Senior Science Officer



Seiko Oya
Project Officer



Yuki Chamberlain
Project Officer

Life Sciences



Yumiko Myoken
Senior Science Officer



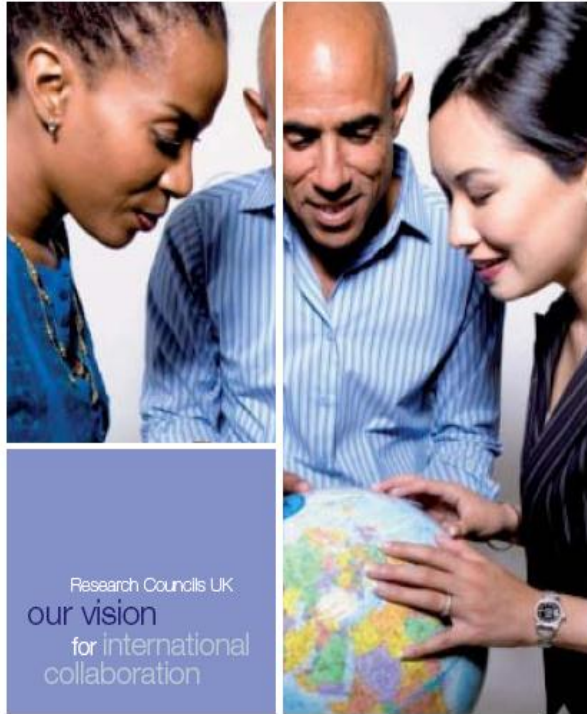
Sachiko Yoshida
Project Officer

S&I Team, BCG Osaka



Shinako Inaida
Project Officer

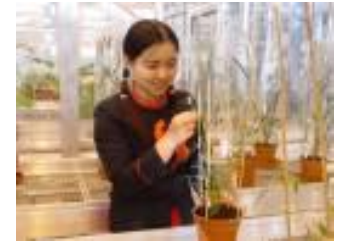
RCUK International Strategy



- Increase RCUK influence in international strategy and policy development - *Influence*
- Promote and facilitate excellent research collaboration - *Excellence*
- Enhance the value and impact of research through international collaboration - *Impact*
- Show RCUK commitment to key global responsibilities - *Responsibility*

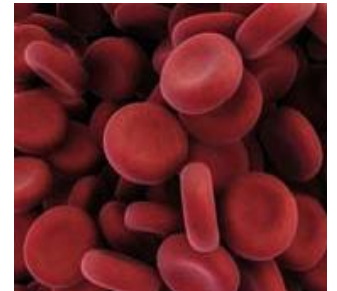
Developing partnerships

- **AHRC / National Institutes for the Humanities** short term fellowships
- **BBSRC /JST** Japan Partnering Awards to develop partnerships
- **ESRC / JSPS** Collaborative research seminars to facilitate and develop research collaboration
- Workshops and visits



Bilateral activities

- **EPSRC / JST** joint call for proposals within 'novel electronic devices using the subatomic properties of materials'
- **MRC / JST** – UK-Japan Partnerships for Advances in Health Research (proposed joint call)
- **ESRC / JSPS** Joint Symposium: Growing Older in Urban Environments: Perspectives from Japan and the UK



Multilateral activities

- NERC and MEXT are members of the **Belmont Forum** a high level group of environmental change research funders.
- RCUK and JSPS participate in the **G8HORCs Initiative on Multilateral Research Funding** a coordinated effort to support multilateral research partnerships.
- The UK and Japan contribute to the **Human Frontier Science Programme** promoting international collaboration in the life sciences.



Facilities

STFC interactions with Japan include:

- ISIS and RIKEN
- Central Laser Facility and Institute of Laser Engineering
- Diamond and Spring-8 Synchrotron

EPSRC offered Japanese researchers assistance to maintain their programmes of work following the earthquake by donating time on the UK High Performance Computing.



Thank you!